

Doors

4.1.1.

4.2.1.

1 wing door

1 and a half wing door

4.1.2.

4.2.2.



4.1.3.

4.2.3.

2 wings doors

Door with frame on 4 sides

4.1.4.

4.2.4.



4.1.5.

4.2.5.

1 wing sliding door

2 wings sliding door

4.1.6.

4.2.6.



4.1.1. Door install on Delta 2000 wall - 1 wing

cod. art. D-W1.0



Thickness

48 mm



Doors panel

Chapter panels



Accessories

Chapter 4.4.



Handles

Chapter 4.4.

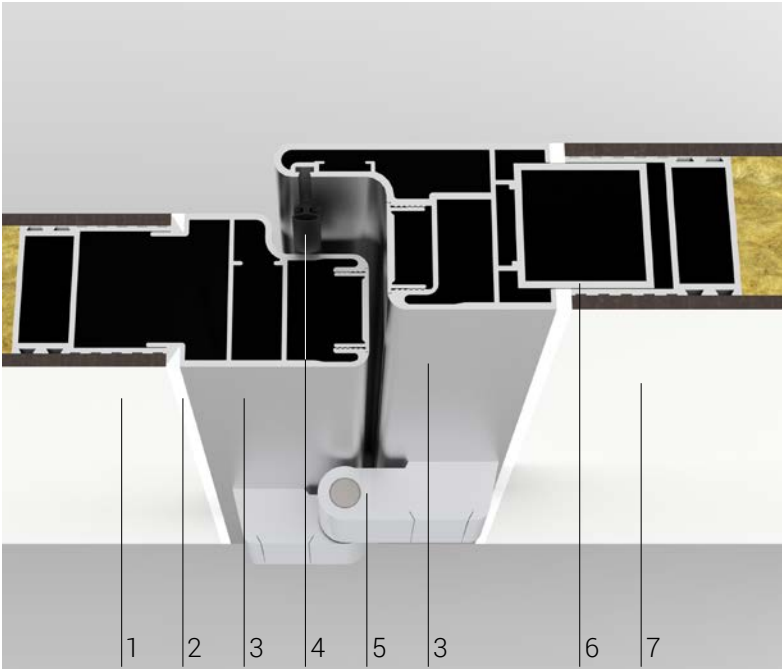


Frame

75 mm



Standard net passage	
1^ wing	H
600	2125
700	
800	
900	
1000	
1100	
1200	



Description

- 1. Wing door panel
- 2. Caulked with silicone
- 3. Completely radial door frame
- 4. Gasket
- 5. External aluminum hinges
- 6. Support aluminum profile (36x36) mm
- 7. Wall panel

Standard profile colors

- RAL 9010 - Pure white
- Anodized aluminum OX

Profile colors on request



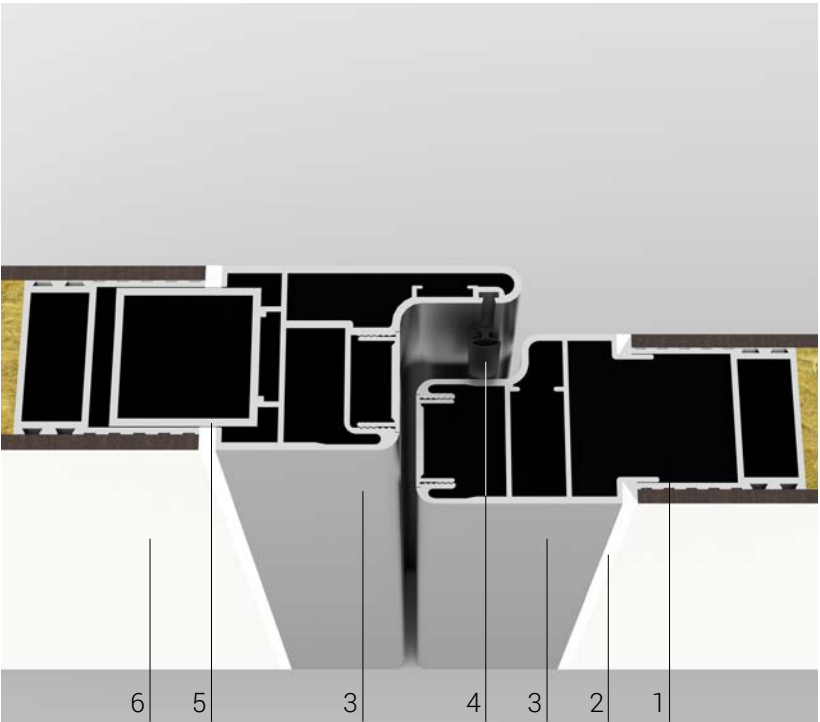
Description

- 1. Wing door panel
- 2. Caulked with silicone
- 3. Completely radial door frame
- 4. Gasket
- 5. Support aluminum profile (36x36) mm
- 6. Wall panel

Standard profile colors

- RAL 9010 - Pure white
- Anodized aluminum OX

Profile colors on request



4.1.2. Door install on Delta 2000 wall - 1 and a half wing

cod. art. D-W1.5



Thickness

48 mm



Doors panel

Chapter panels



Accessories

Chapter 4.4.



Handles

Chapter 4.4.

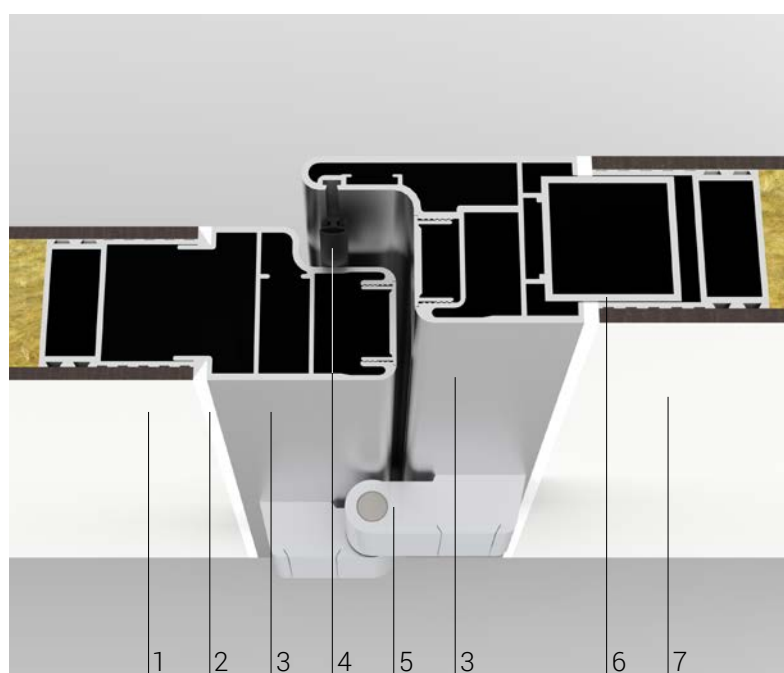


Frame

75 mm



Standard net passage		
1^ wing	2^ wing	H
600	200	2125
700	300	
800	400	
900	500	
1000	600	
1100		
1200		



Description

1. Wing door panel
2. Caulked with silicone
3. Completely radial door frame
4. Gasket
5. External aluminum hinges
6. Support aluminum profile (36x36) mm
7. Wall panel

Standard profile colors

RAL 9010 - Pure white

Anodized aluminum OX

Profile colors on request



RAL palette colors

Description

1. Wing door panel
2. Caulked with silicone
3. Completely radial door frame
4. Gasket
5. Second wing stake

Standard profile colors

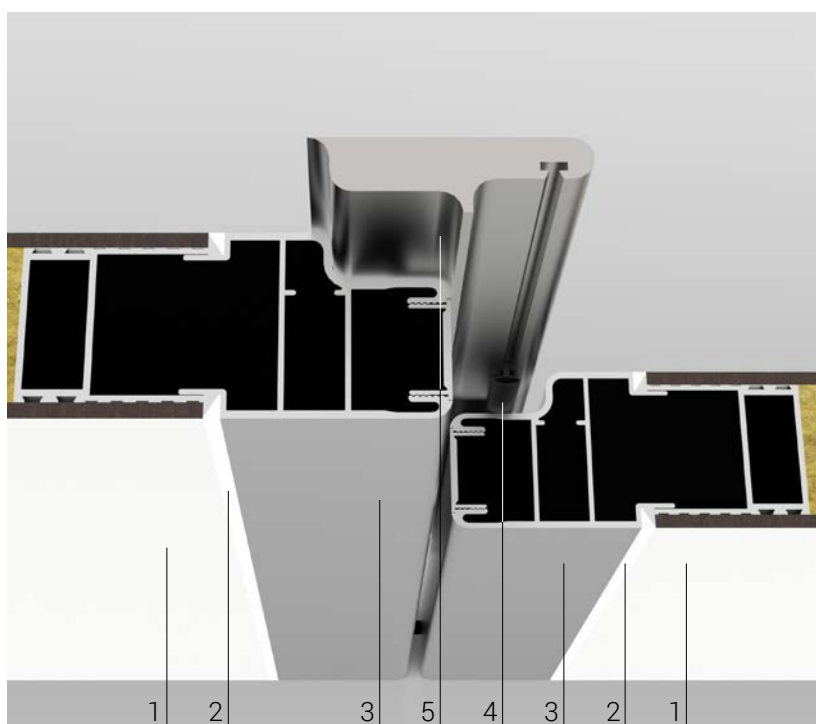
RAL 9010 - Pure white

Anodized aluminum OX

Profile colors on request



RAL palette colors



4.1.3. Door install on Delta 2000 wall - 2 wings

cod. art. D-W2.0



Thickness

48 mm



Doors panel

Chapter panels



Accessories

Chapter 4.4.



Handles

Chapter 4.4.

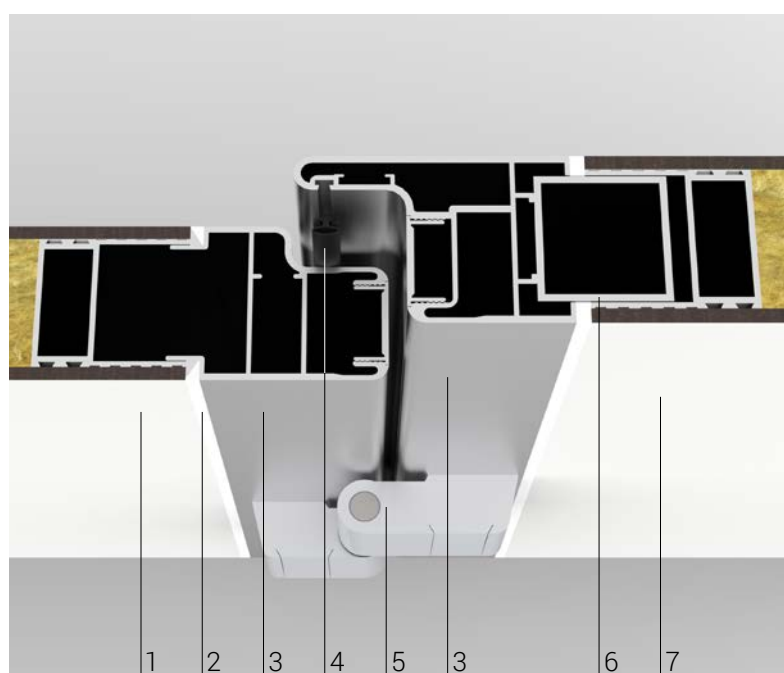


Frame

75 mm



Standard net passage		
1^ wing	2^ wing	H
600	600	2125
700	700	
800	800	
900	900	
1000	1000	
1100	1100	
1200	1200	



Description

1. Wing door panel
2. Caulked with silicone
3. Completely radial door frame
4. Gasket
5. External aluminum hinges
6. Support aluminum profile (36x36) mm
7. Wall support

Standard profile colors

RAL 9010 - Pure white

Anodized aluminum OX

Profile colors on request



RAL palette colors

Description

1. Wing door panel
2. Caulked with silicone
3. Completely radial door frame
4. Gasket
5. Second wing stake

Standard profile colors

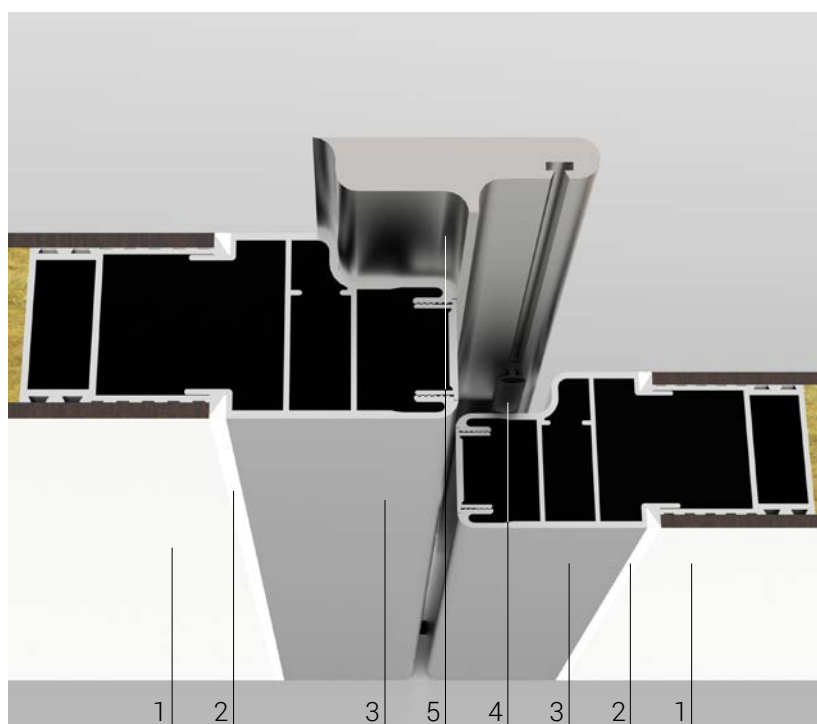
RAL 9010 - Pure white

Anodized aluminum OX

Profile colors on request



RAL palette colors



4.1.4. Door install on Delta 2000 wall - Door with frame on 4 sides

cod. art. D-W4S



Thickness

48 mm



Doors panel

Chapter panels



Accessories

Chapter 4.4.



Handles

Chapter 4.4.

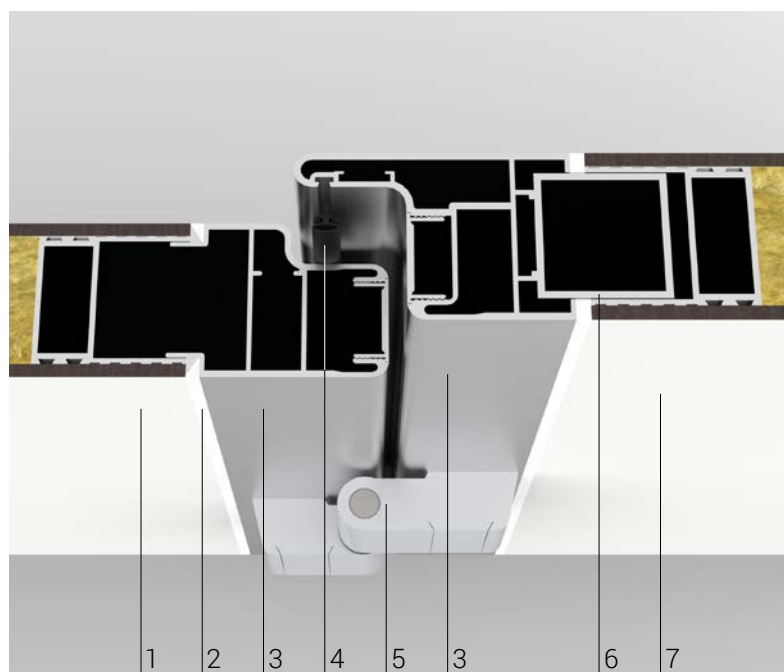


Frame

75 mm



Standard net passage	
1^ wing	H
600	2125
700	
800	
900	
1000	
1100	
...	



Description

1. Wing door panel
2. Caulked with silicone
3. Completely radial door frame
4. Gasket
5. External aluminum hinges
6. Support aluminum profile (36x36) mm
7. Wall panel

Standard profile colors

RAL 9010 - Pure white

Anodized aluminum OX

Profile colors on request



RAL palette colors

Description

1. Wing door panel
2. Caulked with silicone
3. Completely radial door frame
4. Gasket
5. Second wing stake

Standard profile colors

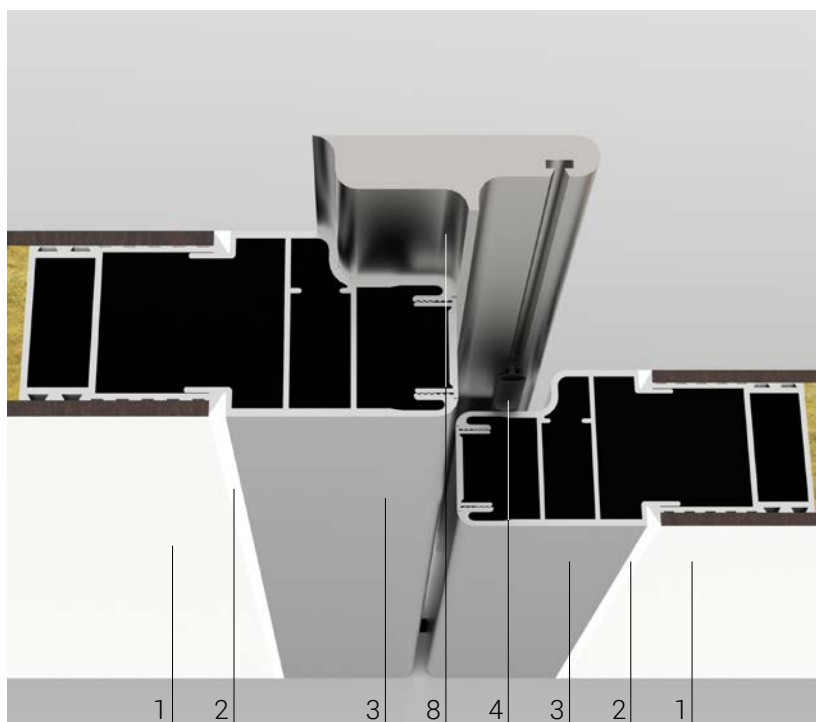
RAL 9010 - Pure white

Anodized aluminum OX

Profile colors on request

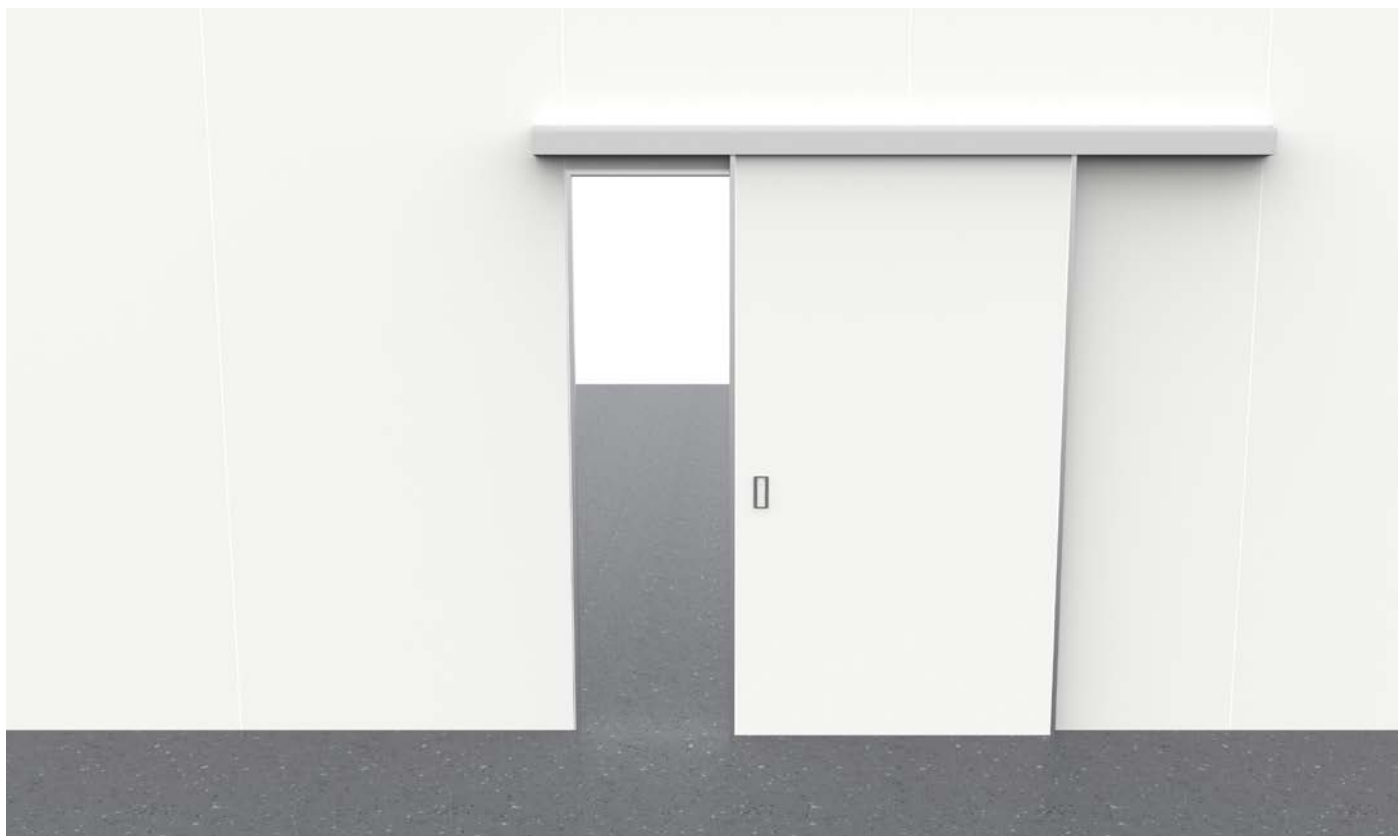


RAL palette colors



4.1.5. Door install on Delta 2000 wall - 1 wing sliding door

cod. art. D-SL1



Thickness

48 mm



Doors panel

Chapter panels



Accessories

Chapter 4.4.

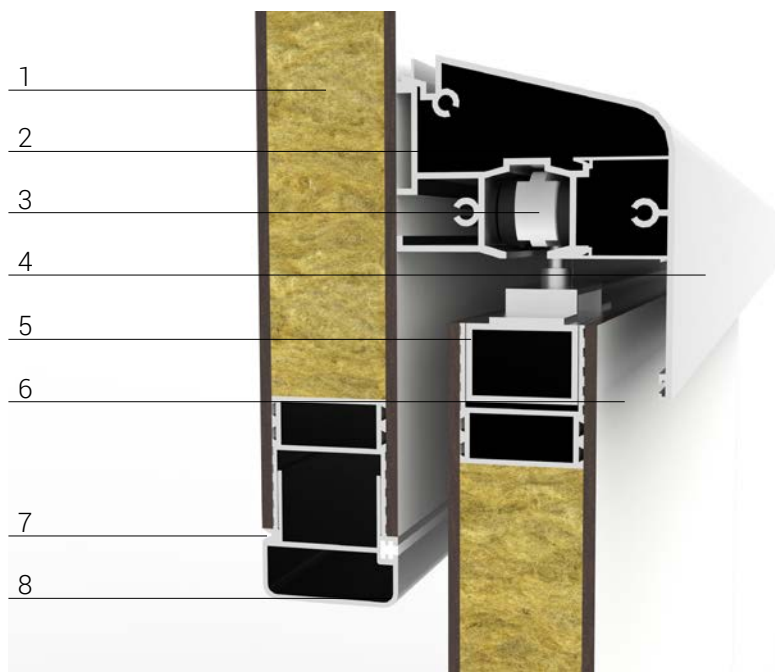


Handles

Chapter 4.4.



Standard net passage	
1^ wing	H
600	2125
700	
800	
900	
1000	
1100	
...	



Description

1. Wall panel
2. Rail for sliding door
3. Runner for sliding door
4. Aluminum carter for sliding door
5. Aluminum tubular 36x25 mm
6. Sliding door wing
7. Caulked with silicone
8. Head profile

Standard profile colors

RAL 9010 - Pure white

Anodized aluminum OX

Profile colors on request



RAL palette colors

Description

1. Wall panel
2. Gasket
3. Head profile
4. Caulked with silicone
5. Sliding door wing

Standard profile colors

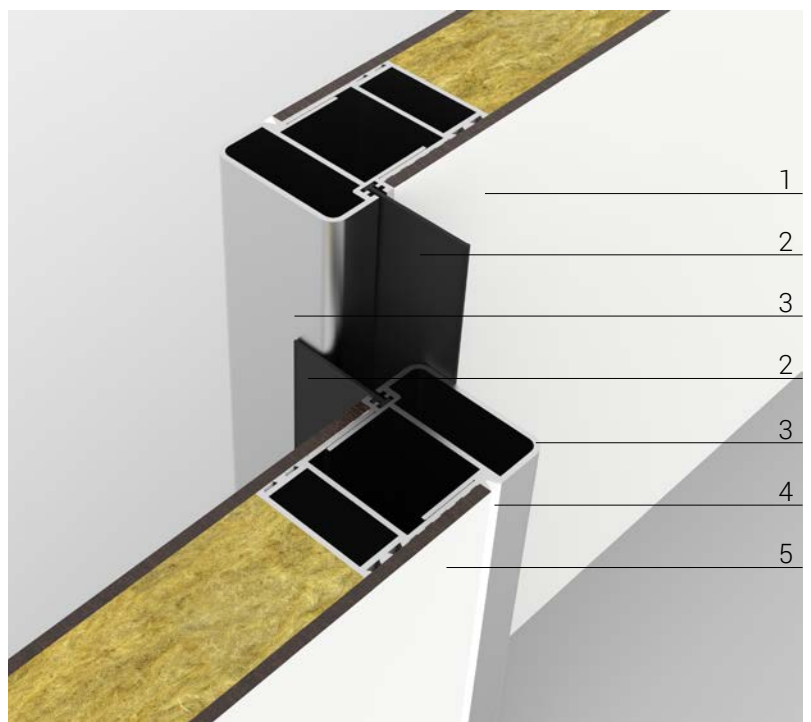
RAL 9010 - Pure white

Anodized aluminum OX

Profile colors on request

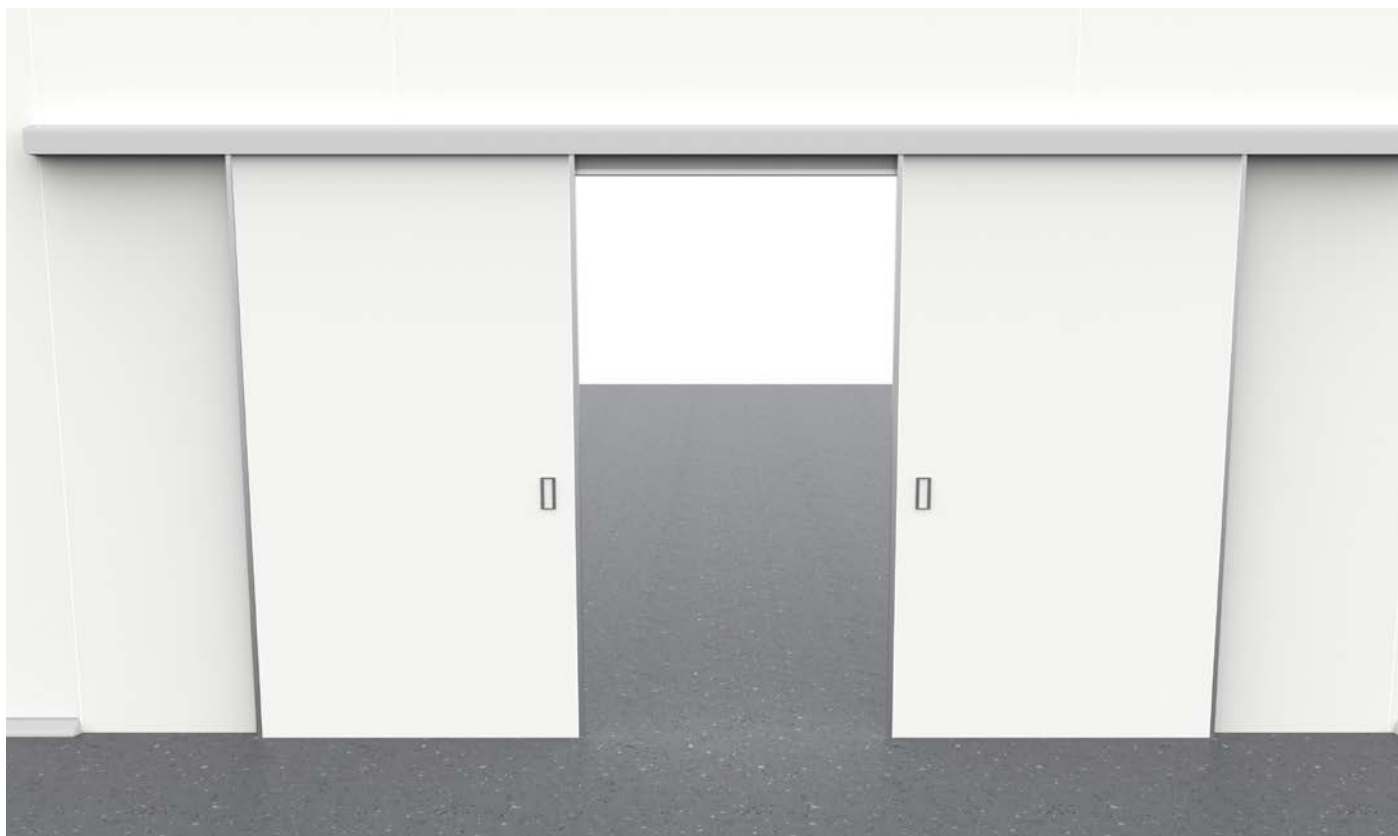


RAL palette colors



4.1.6. Door install on Delta 2000 wall - 2 wings sliding door

cod. art. D-SL2



Thickness

48 mm



Doors panel

Chapter panels



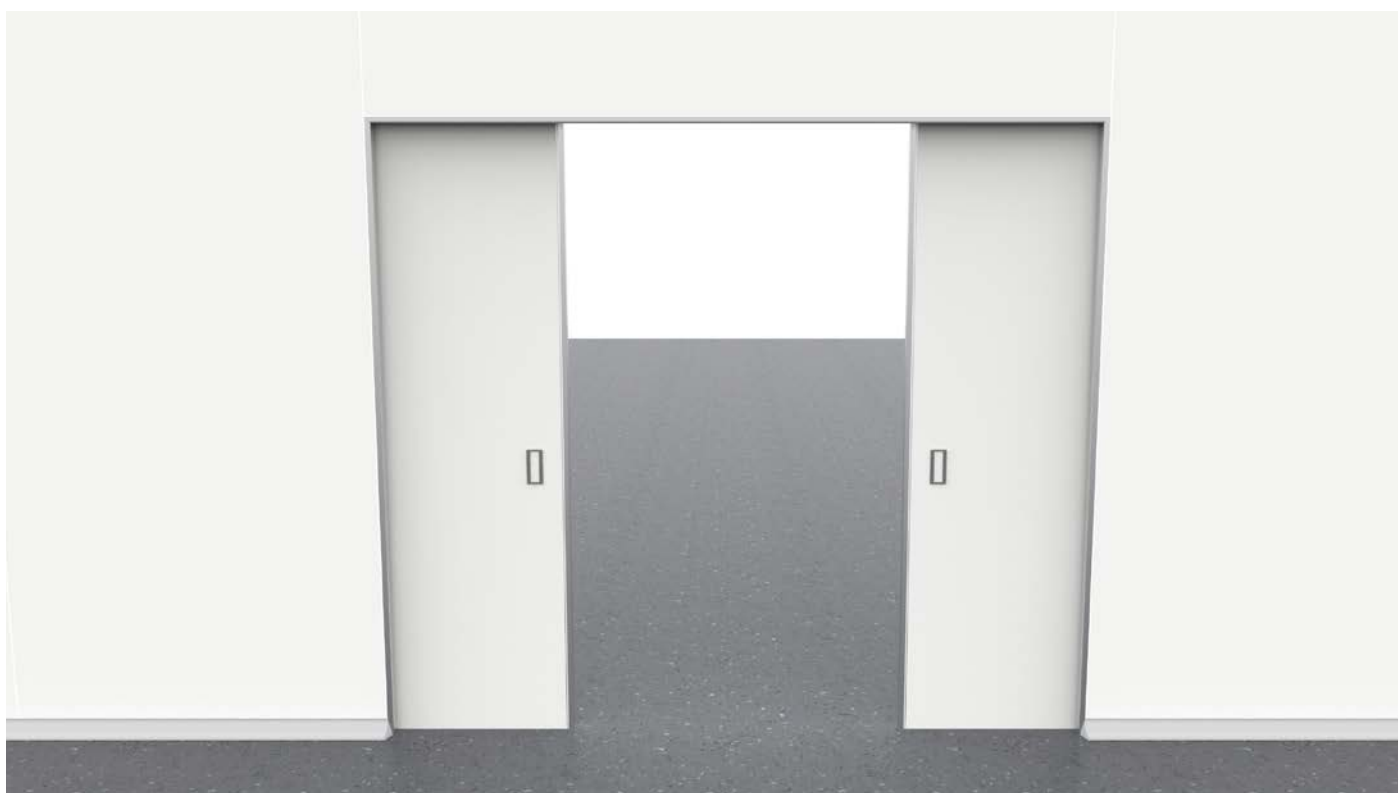
Accessories

Chapter 4.4.

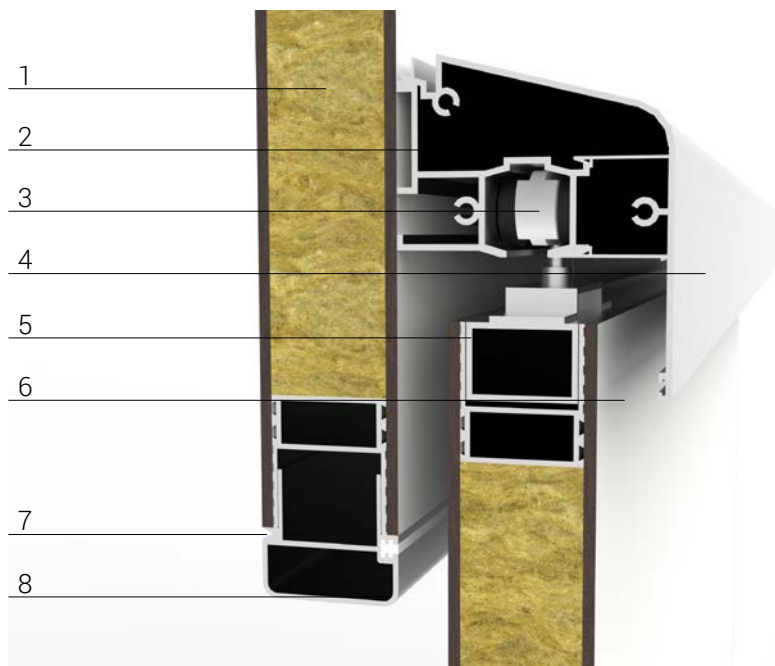


Handles

Chapter 4.4.



Standard net passage		
1^ wing	2^ wing	H
600	600	2125
700	700	
800	800	
900	900	
1000	1000	
1100	1100	
1200	1200	



Description

1. Wall panel
2. Rail for sliding door
3. Runner for sliding door
4. Aluminum carter for sliding door
5. Aluminum tubular 36x25 mm
6. Sliding door wing
7. Caulked with silicone
8. Head profile

Standard profile colors

RAL 9010 - Pure white

Anodized aluminum OX

Profile colors on request



RAL palette colors

Description

1. Wall panel
2. Gasket
3. Head profile
4. Caulked with silicone
5. Sliding door wing

Standard profile colors

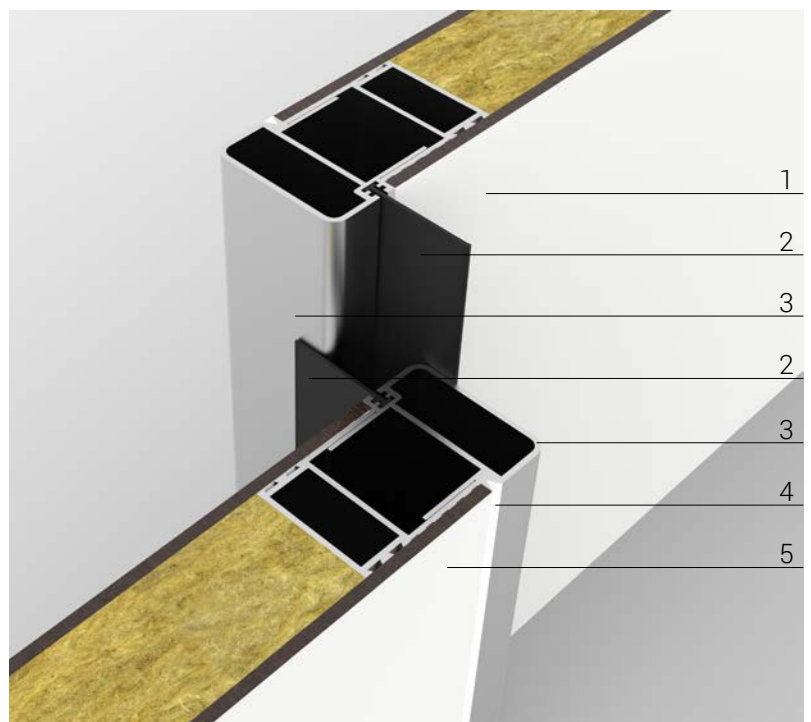
RAL 9010 - Pure white

Anodized aluminum OX

Profile colors on request



RAL palette colors



4.2.1. Door install on existing wall - 1 wing

cod. art. D-MW1.0



Thickness

48 mm



Doors panel

Chapter panels



Accessories

Chapter 4.4.



Handles

Chapter 4.4.

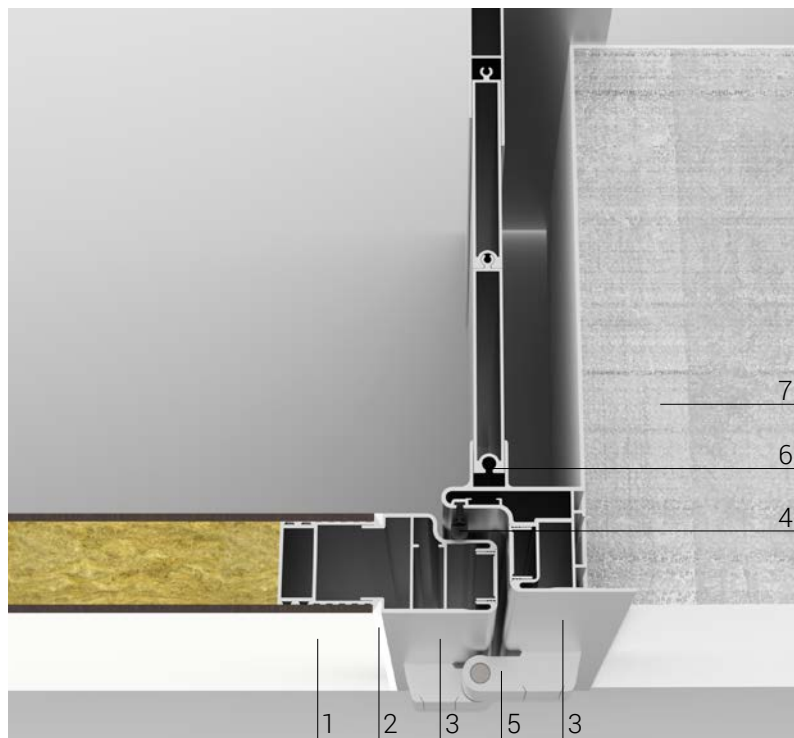


Frame

65 mm - 70 mm



Standard net passage	
1^ wing	H
600	2125
700	
800	
900	
1000	
1100	
1200	



Description

1. Wing door panel
2. Caulked with silicone
3. Completely radial door frame
4. Gasket
5. External aluminum hinges
6. Profile to finishing the hole
7. Existing wall

Standard profile colors

- RAL 9010 - Pure white
- Anodized aluminum OX

Profile colors on request



RAL palette colors

Description

1. Wing door panel
2. Caulked with silicone
3. Completely radial door frame
4. Gasket
5. Profile to finishing the hole
6. Existing wall

Standard profile colors

- RAL 9010 - Pure white
- Anodized aluminum OX

Profile colors on request



RAL palette colors



4.2.2. Door install on existing wall - 1 and a half wing

cod. art. D-MW1.5



Thickness

48 mm



Doors panel

Chapter panels



Accessories

Chapter 4.4.



Handles

Chapter 4.4.



Frame

65 mm - 70 mm



Standard net passage		
1^ wing	2^ wing	H
600	200	2125
700	300	
800	400	
900	500	
1000	600	
1100		
1200		



Description

1. Wing door panel
2. Caulked with silicone
3. Completely radial door frame
4. Gasket
5. External aluminum hinges
6. Profile to finishing the hole
7. Existing wall

Standard profile colors

- RAL 9010 - Pure white
- Anodized aluminum OX

Profile colors on request



RAL palette colors

Description

1. Wing door panel
2. Caulked with silicone
3. Completely radial door frame
4. Gasket
5. Extension for second wing

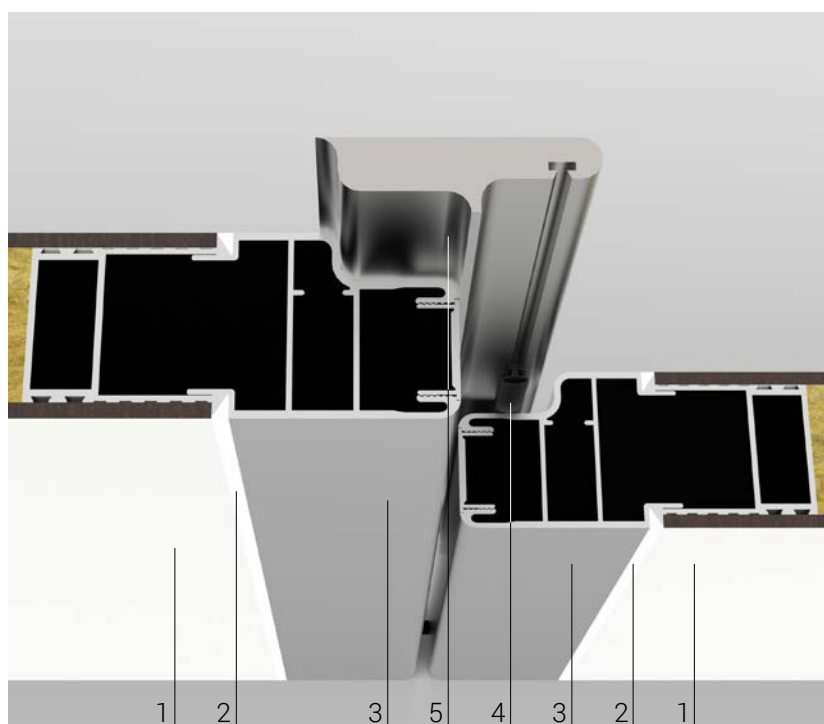
Standard profile colors

- RAL 9010 - Pure white
- Anodized aluminum OX

Profile colors on request



RAL palette colors



4.2.3. Door install on existing wall - 2 wings

cod. art. D-MW2.0



Thickness

48 mm



Doors panel

Chapter panels



Accessories

Chapter 4.4.



Handles

Chapter 4.4.

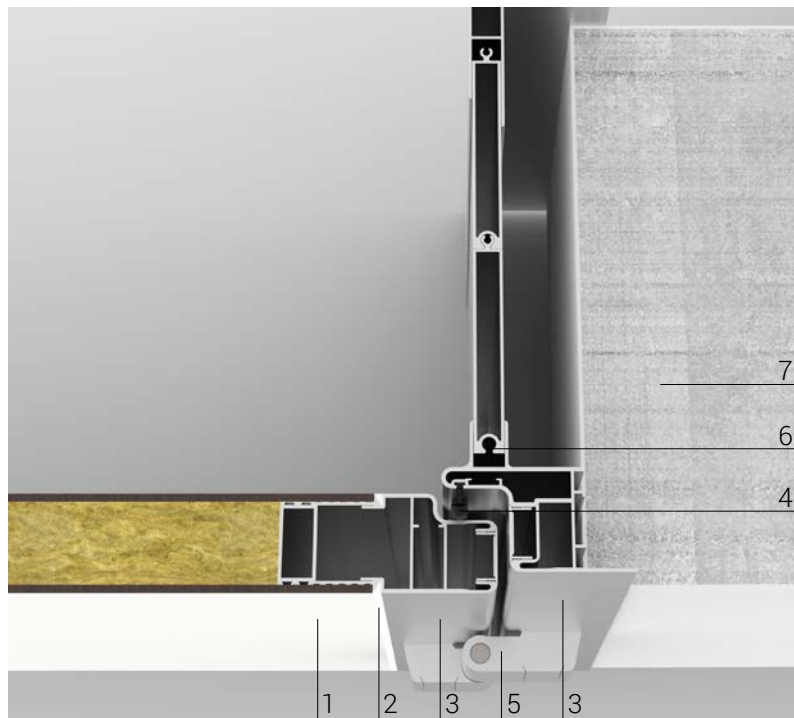


Frame

65 mm - 70 mm



Standard net passage		
1^ wing	2^ wing	H
600	600	2125
700	700	
800	800	
900	900	
1000	1000	
1100	1100	
1200	1200	



Description

1. Wing door panel
2. Caulked with silicone
3. Completely radial door frame
4. Gasket
5. External aluminum hinges
6. Profile to finishing the hole
7. Existing wall

Standard profile colors

- RAL 9010 - Pure white
- Anodized aluminum OX

Profile colors on request



RAL palette colors

Description

1. Wing door panel
2. Caulked with silicone
3. Completely radial door frame
4. Gasket
5. Extension for second wing

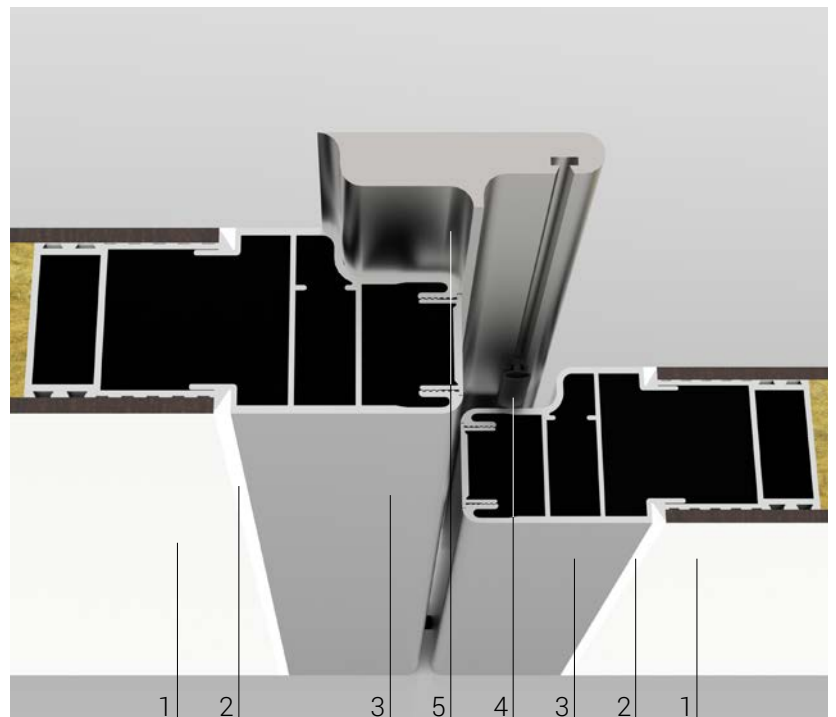
Standard profile colors

- RAL 9010 - Pure white
- Anodized aluminum OX

Profile colors on request



RAL palette colors



4.2.4. Door install on existing wall - Door with frame on 4 sides

cod. art. D-MW4S



Thickness

48 mm



Doors panel

Chapter panels



Accessories

Chapter 4.4.



Handles

Chapter 4.4.

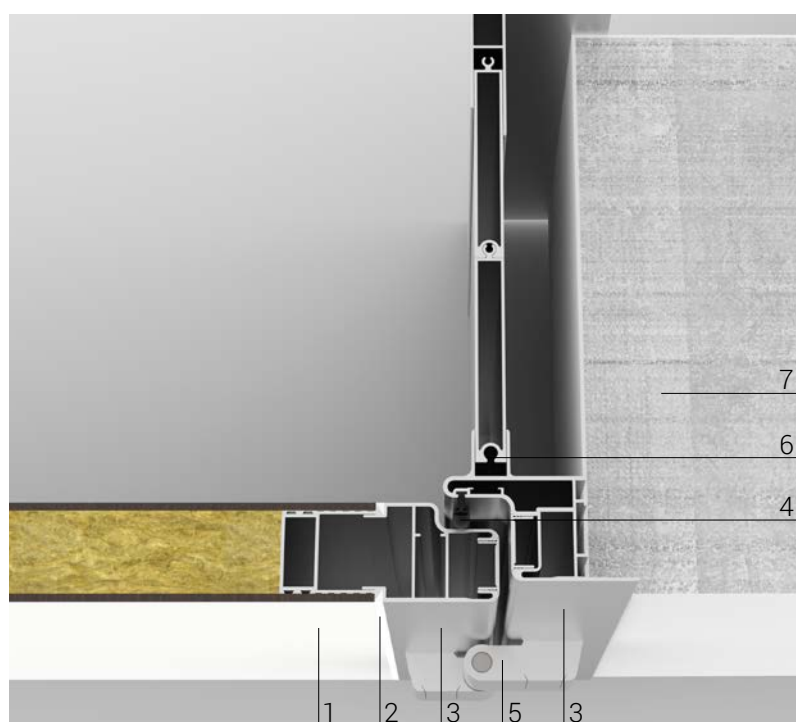


Frame

65 mm - 70 mm



Standard net passage	
1^ wing	H
600	2125
700	
800	
900	
1000	
1100	
...	



Description

1. Wing door panel
2. Caulked with silicone
3. Completely radial door frame
4. Gasket
5. External aluminum hinges
6. Profile to finishing the hole
7. Existing wall

Standard profile colors

- RAL 9010 - Pure white
- Anodized aluminum OX

Profile colors on request



RAL palette colors

Description

1. Wing door panel
2. Caulked with silicone
3. Completely radial door frame
4. Gasket
5. Profile to finishing the hole
6. Existing wall

Standard profile colors

- RAL 9010 - Pure white
- Anodized aluminum OX

Profile colors on request



RAL palette colors



4.2.5. Door install on existing wall - 1 wing sliding door

cod. art. D-MSL1



Thickness

48 mm



Doors panel

Chapter panels



Accessories

Chapter 4.4.

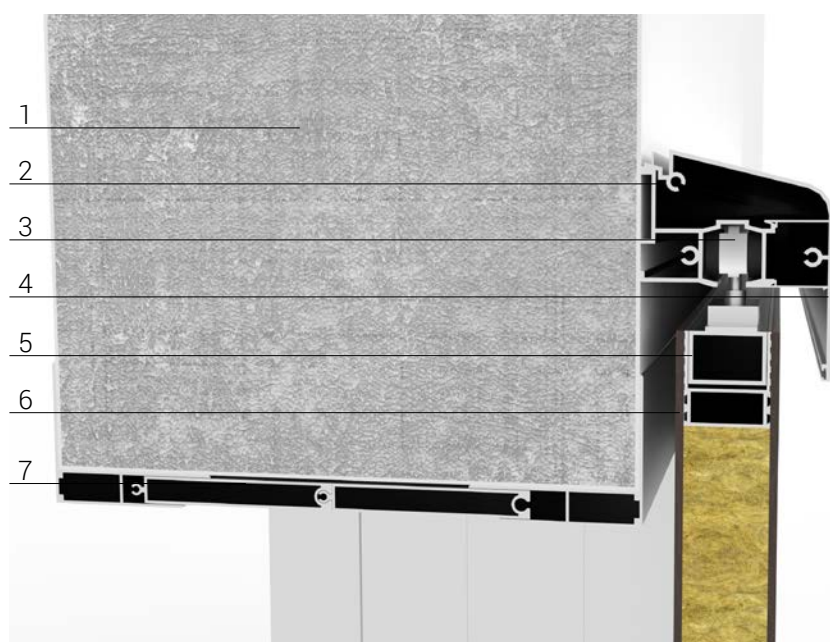


Handles

Chapter 4.4.



Standard net passage		
1^ wing	2^ wing	H
600	600	2125
700	700	
800	800	
900	900	
1000	1000	
1100	1100	
1200	1200	



Description

- Existing wall
- Rail for sliding door
- Runner for sliding door
- Aluminum carter for sliding door
- Aluminum tubular 36x25 mm
- Sliding door wing
- Profile to finishing the hole

Standard profile colors

- RAL 9010 - Pure white
- Anodized aluminum OX

Profile colors on request



RAL palette colors

Description

- Existing wall
- Profile to finishing the hole
- Gasket
- Head profile
- Caulked with silicone
- Sliding door wing

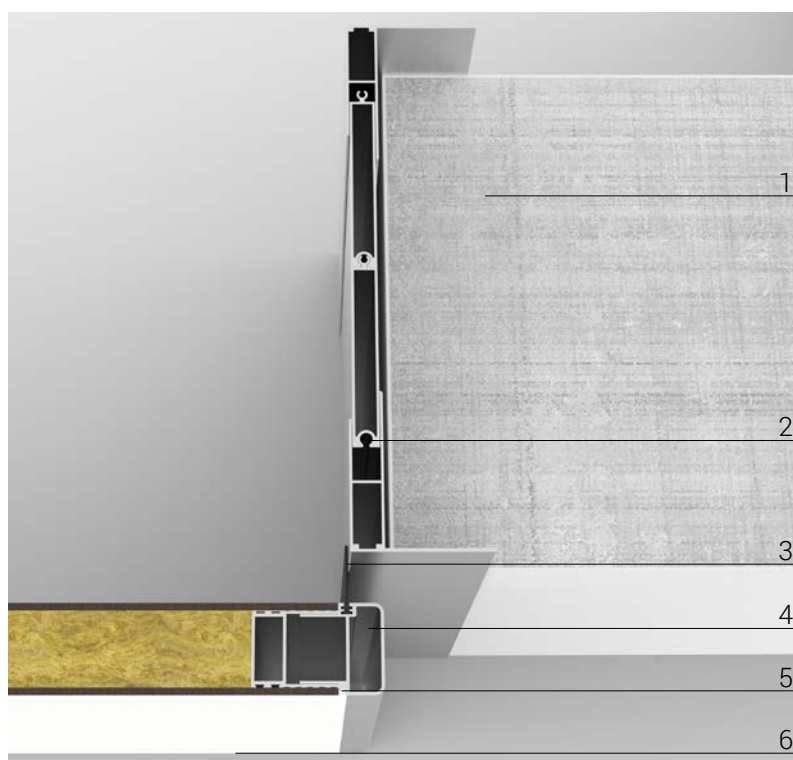
Standard profile colors

- RAL 9010 - Pure white
- Anodized aluminum OX

Profile colors on request



RAL palette colors



4.2.6.

Door install on existing wall - 2 wings sliding door

cod. art. D-MSL2



Thickness

48 mm



Doors panel

Chapter panels



Accessories

Chapter 4.4.

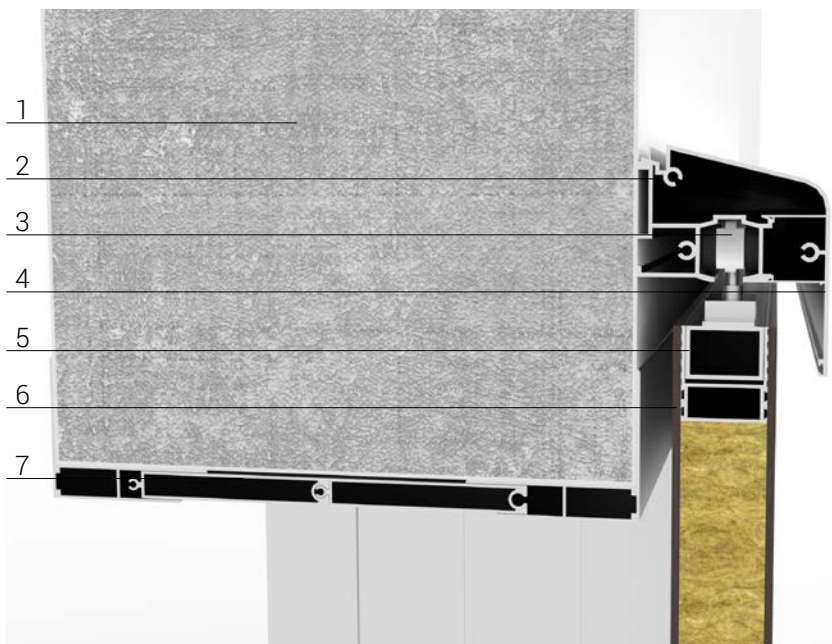


Handles

Chapter 4.4.



Standard net passage		
1^ wing	2^ wing	H
600	600	2125
700	700	
800	800	
900	900	
1000	1000	
1100	1100	
1200	1200	



Description

- Existing wall
- Rail for sliding door
- Runner for sliding door
- Aluminum carter for sliding door
- Aluminum tubular 36x25 mm
- Sliding door wing
- Profile to finishing the hole

Standard profile colors

- RAL 9010 - Pure white
- Anodized aluminum OX

Profile colors on request



RAL palette colors

Description

- Existing wall
- Profile to finishing the hole
- Gasket
- Head profile
- Caulked with silicone
- Sliding door wing

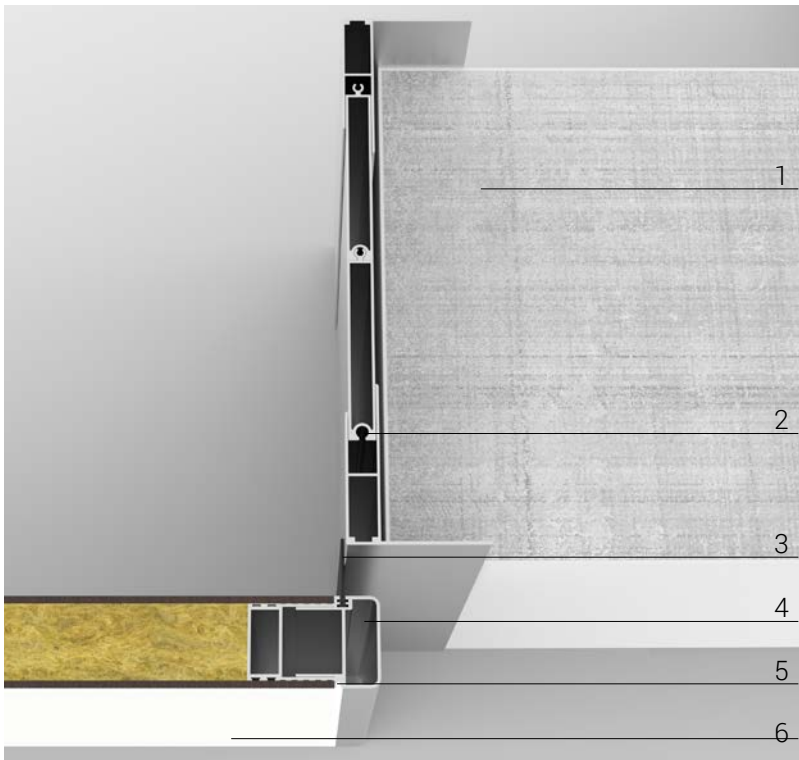
Standard profile colors

- RAL 9010 - Pure white
- Anodized aluminum OX

Profile colors on request



RAL palette colors



4.3. Doors windows

Types of doors



Types of windows



Window th. 48 mm



Rounded corners
r. 145°



Window th. 48 mm



Squared corners
r. 90°



Window th. 48 mm



Squared corners
r. 90°



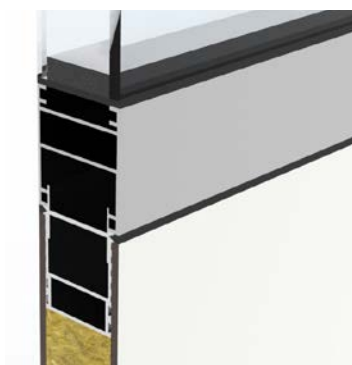




Window th. 48 mm



Squared corners
r. 90°



Window with 55
profile th.48 mm

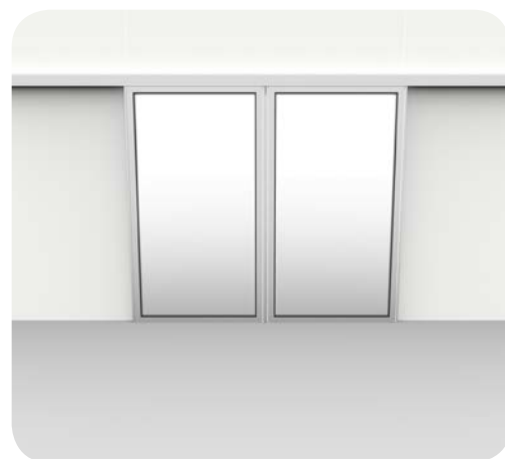
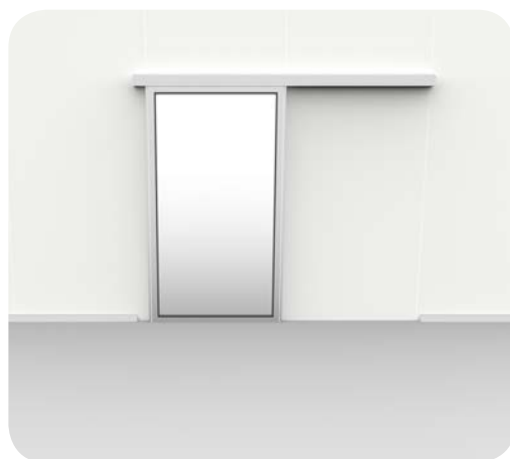


Window th. 12 mm

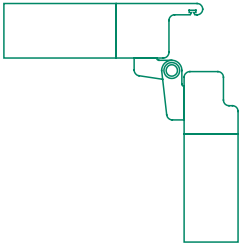
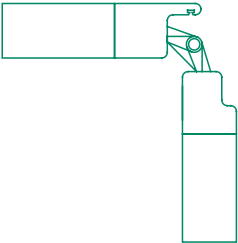
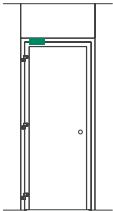
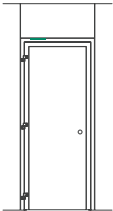
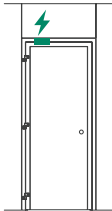
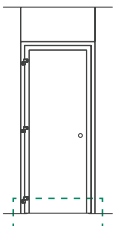
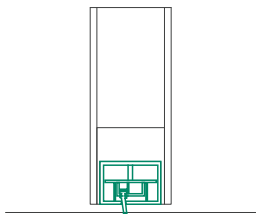
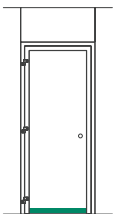
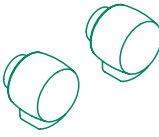
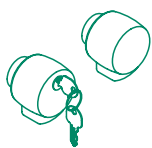
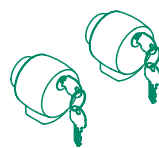



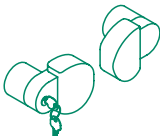
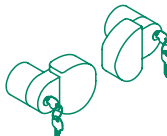




Mirror



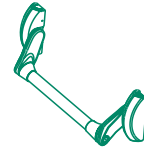


4.4. Doors accessories

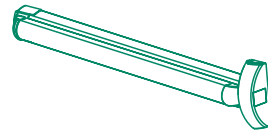
Hinges	 
Doorclosers	  
Airstop	 
55 profile	
Push-open knobs	  
Lever handle	
Stainless steel fix knob	
Knob NOS	  
Stainless steel C fix handle	
Stainless steel C modeled fix handle	



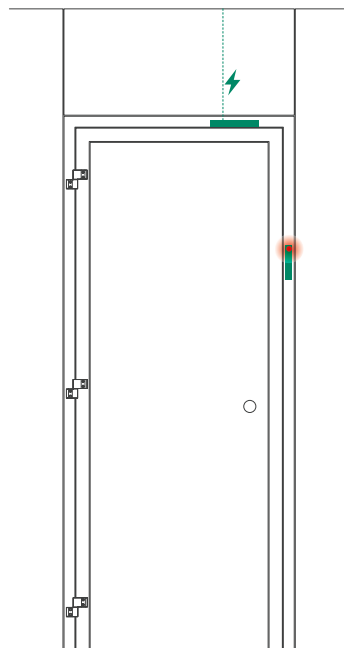
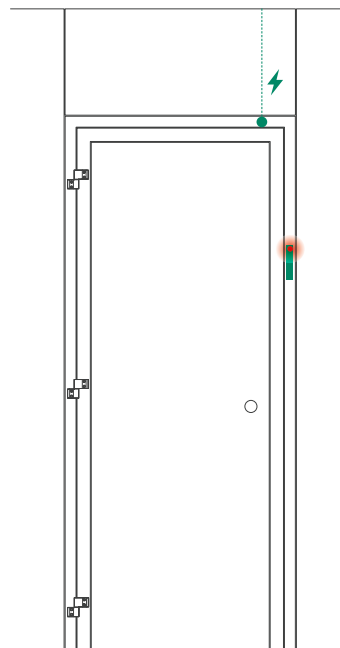
Pushbar



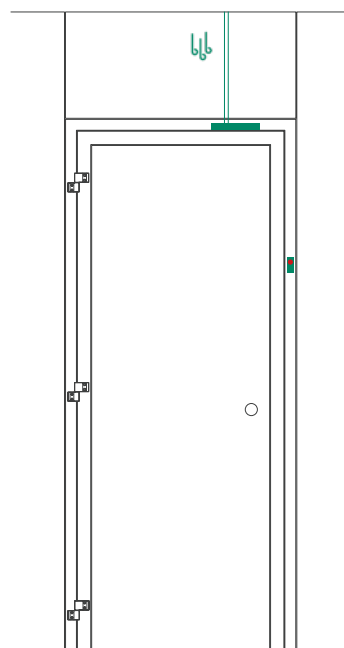
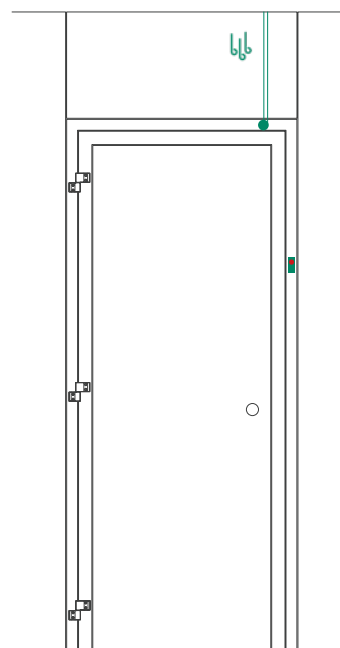
Stainless steel pushbar



Fast push

Interlock with magnet
lock closerInterlock with door
status closer

Electrical interlock

Interlock with pneumatic
magnet lock closerInterlock with pneumatic
door status closer

Atex interlock